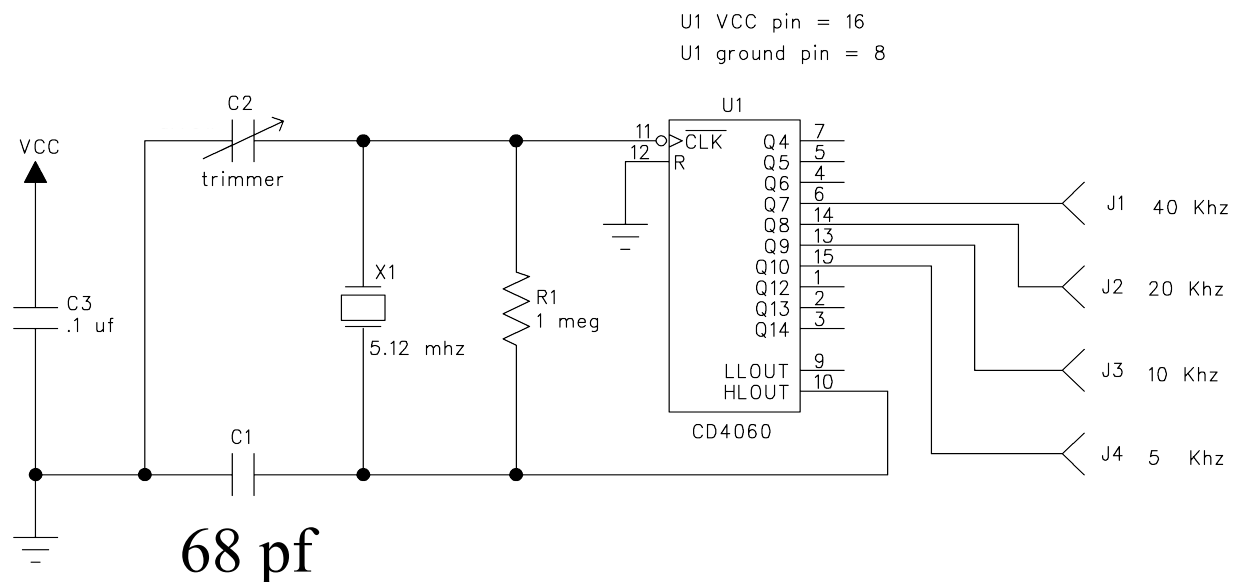
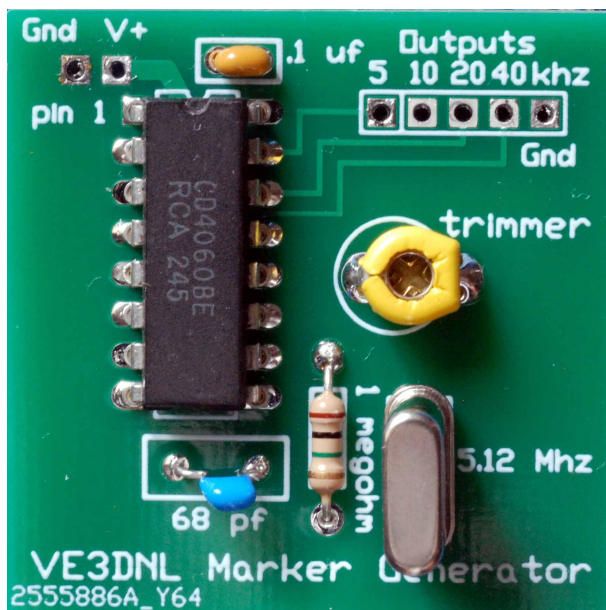


Schematic Diagram for the VE3DNL Marker Generator



Parts Placement Diagram Top View of Circuit Board



Notes:

- 1) V+ on circuit board is the same as VCC on the schematic diagram.
- 2) The yellow trimmer cap has a flat side which should be oriented towards the right side of the circuit board as shown on the silk screen.



Jackson Harbor Press

WB9KZY at GMAIL dot com

<http://wb9kzy.com/ham.htm>